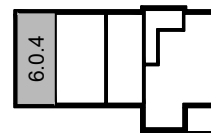
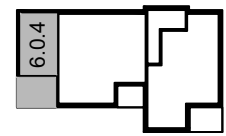


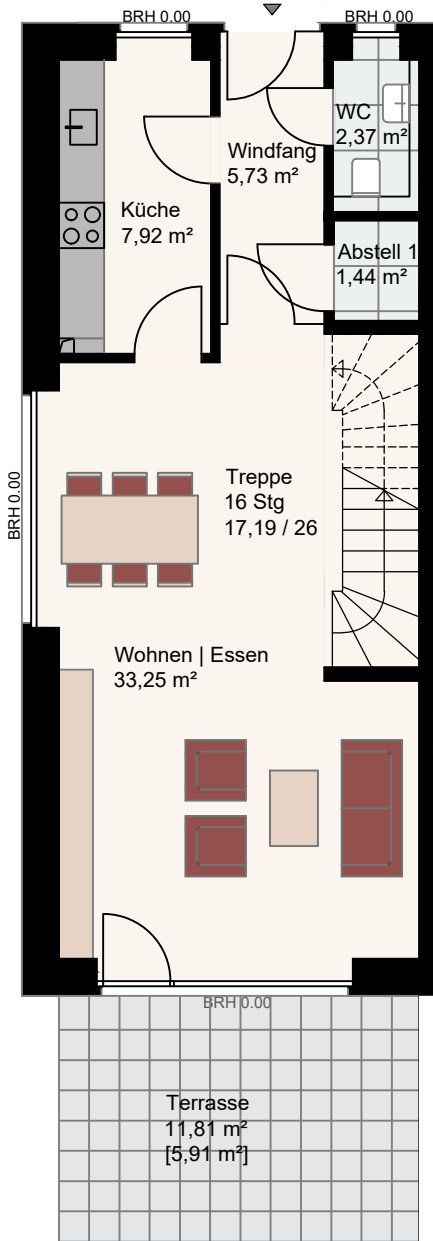
EG Haus 6



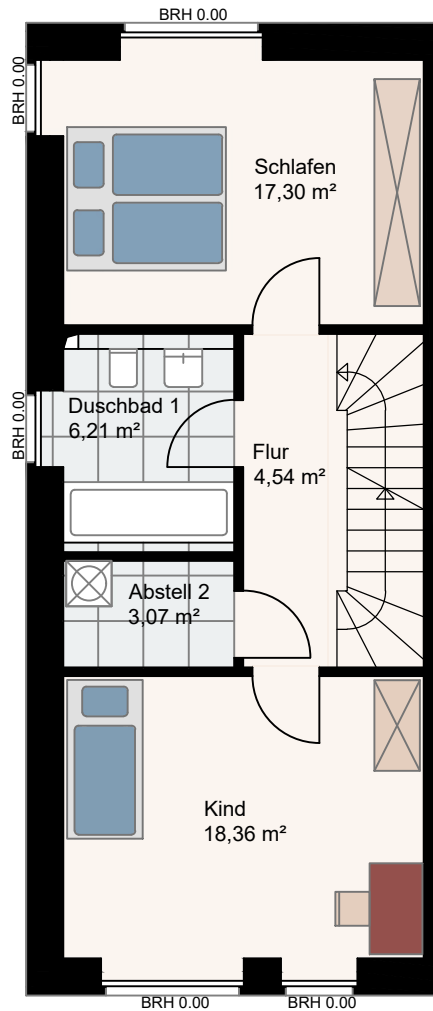
1.OG Haus 6



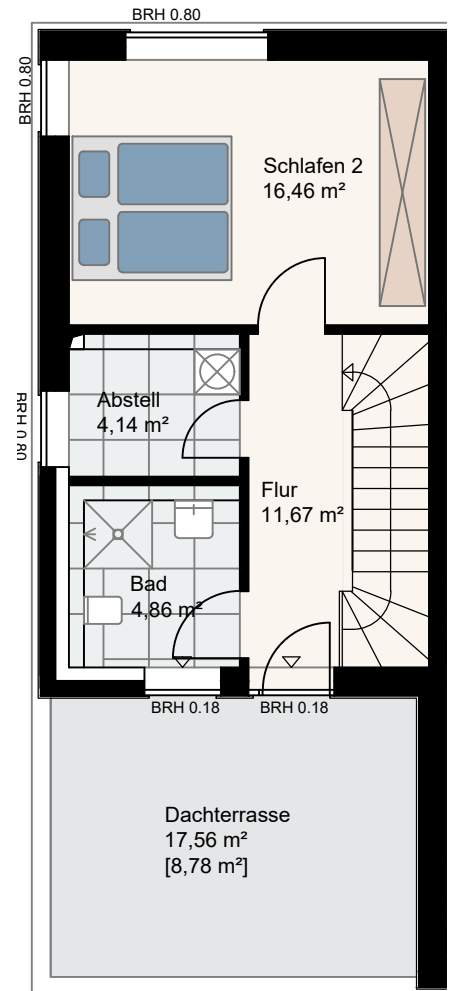
DG Haus 6



EG



1.OG



DG

## Wohnpark Schönböcken

### Wohnung 6.0.4

Maßstab 1:100

Erdgeschoss / 1. Obergeschoss / Dachgeschoss Haus 6

4 Zimmer

146,01 m² Wohnfläche